

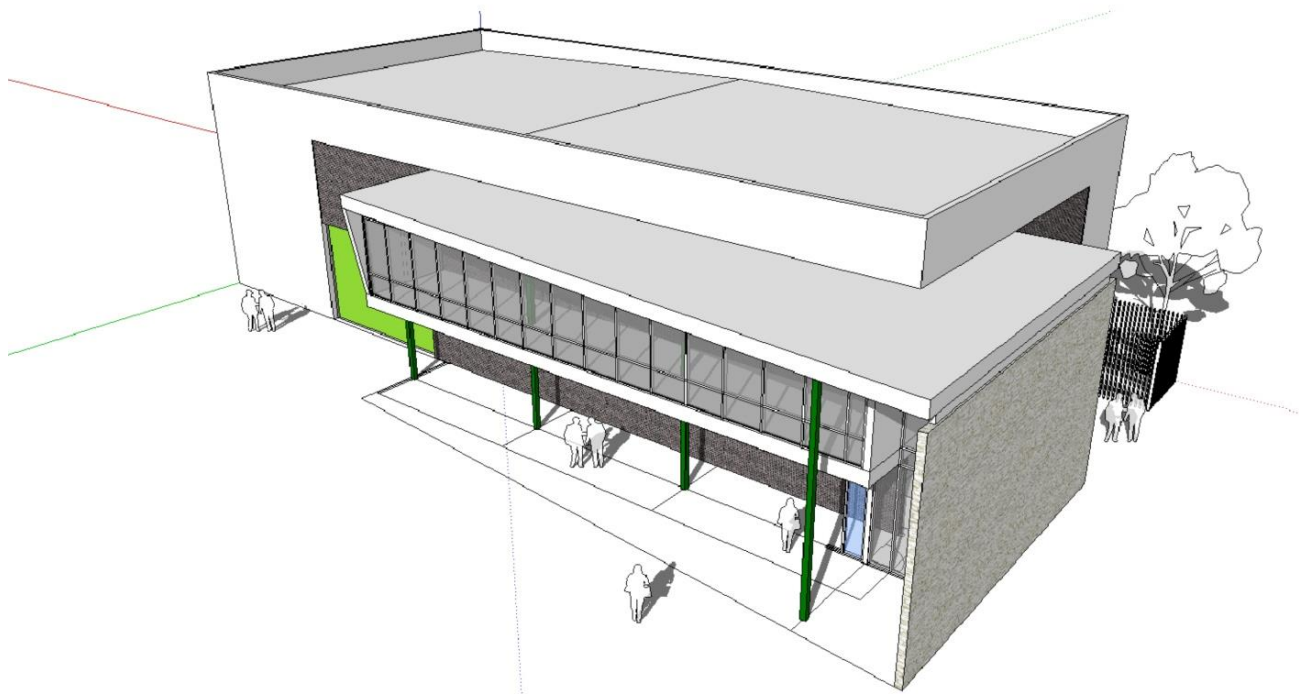
## 62 Millrose Drive, Malaga Warehouse

### Overview

The development creates a speculative warehouse with 420m<sup>2</sup> of 9m high warehouse space and 160m<sup>2</sup> of office space. The project balanced market needs and desires with construction costs to pitch the space correctly to prospective buyers.

### Key Structural Design Features

Perth's warehouse typology of Tilt-up concrete panel construction was used to create this economic warehouse design. Façade set out was adjusted to suit the panel's capabilities. The suspended slab for the office floor was originally conceived as a lightweight joisted floor, and then once tested within the leasing and selling agent's recommendations, was changed to a thin bondek concrete slab on steel beams to create a more robust feel to the floor.



**Client:** Conspar Super Fund

**Architect:** ee'kos Architects

**Contractor:** Tbc

**Construction Cost:** \$1m

**Completion:** July 2014

**Stage:** Tender